

BIG RIG MEDIA®

The screenshot shows the 'Accounts' preferences window with the 'Add Account' dialog box open. The dialog box contains the following text and fields:

Add Account
You'll be guided through the necessary steps to set up an additional mail account.
To get started, fill out the following information:

Full Name:
Email Address:
Password:

Buttons: Cancel, Go Back, Continue

1. Open Preferences
2. Choose Accounts
3. Choose File > Add Account or Click the + on the lower left of the Preferences dialog box.
4. Enter general information about the account.
 - Enter a full name which will be displayed in outgoing messages. Enter your email address and the password you set up with Big Rig Media.
 - Press continue.

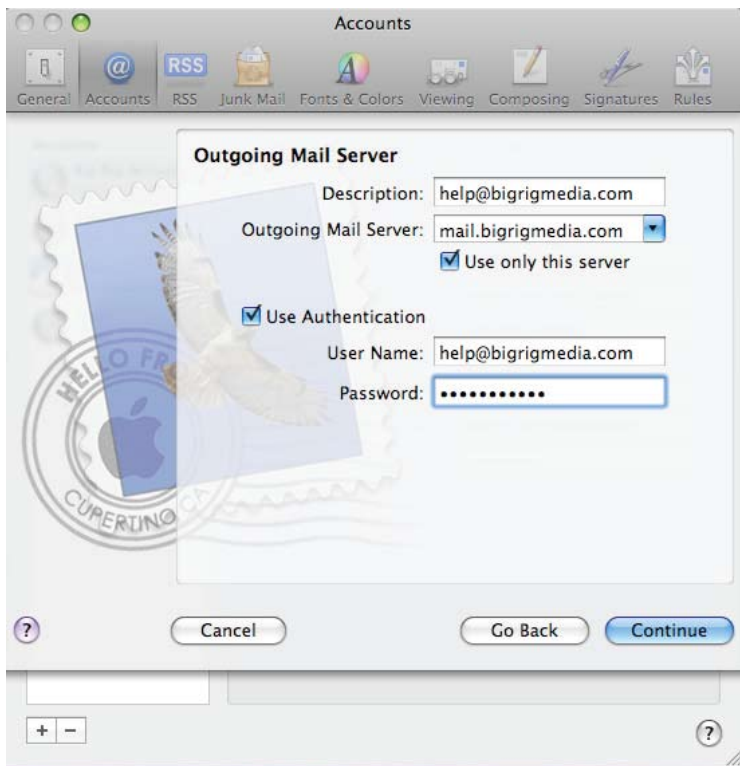
The screenshot shows the 'Accounts' preferences window with the 'Incoming Mail Server' dialog box open. The dialog box contains the following text and fields:

Incoming Mail Server

Account Type:
Description:
Incoming Mail Server:
User Name:
Password:

Buttons: Cancel, Go Back, Continue

5. Enter information about the incoming server
 - Account type: Choose > POP
 - Enter a description of you account (ex: Office, Home, email address, etc.)
 - Incoming Mail Server: mail.bigrigmedia.com
 - User Name: Enter your email address
 - Password: Enter your password
 - Press Continue (this may take a few minutes)

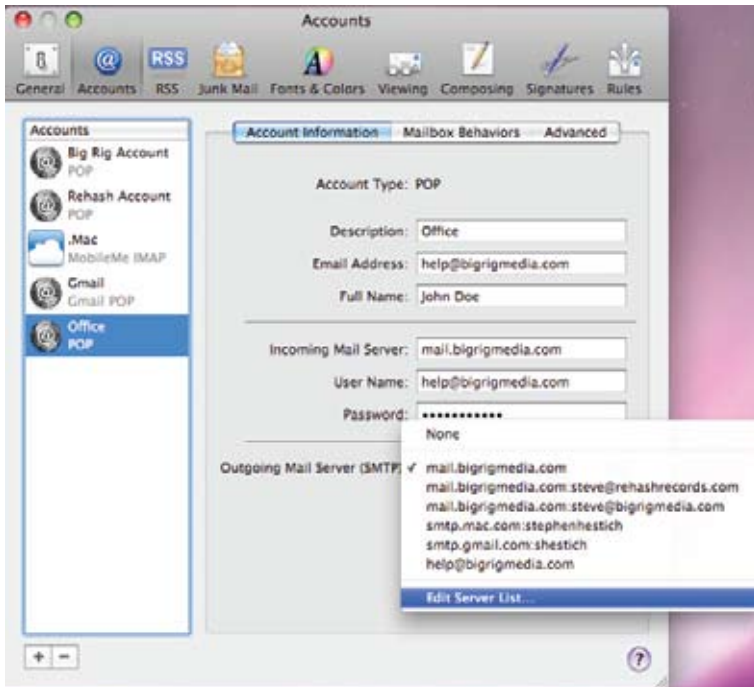


6. Enter information about the outgoing server
 - Description: (example: Office, Home, etc.)
 - Outgoing Server: mail.bigrigmedia.com
 - Click "Use Authentication"
 - Enter User Name and Password
 - Press Continue (this may take a few minutes)



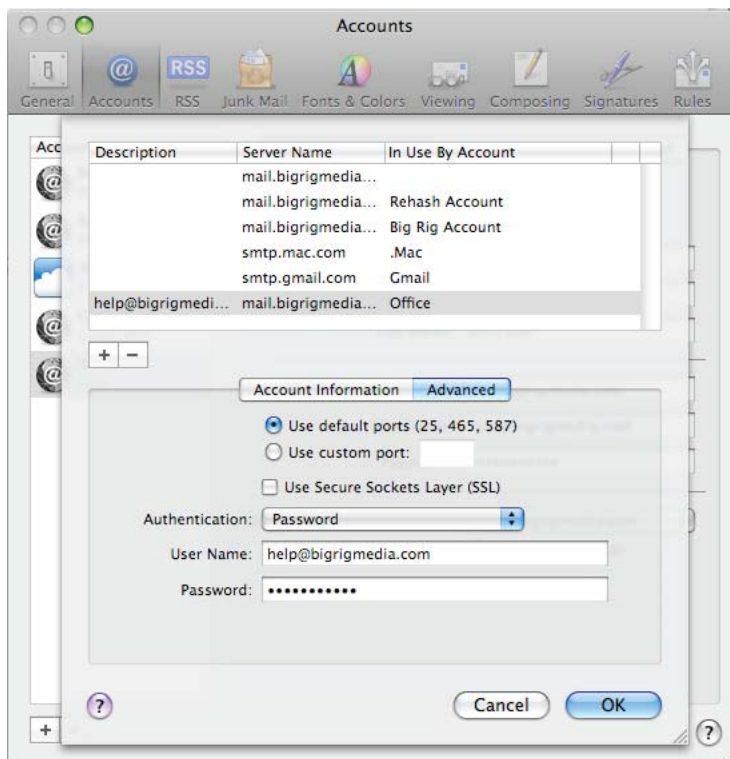
8. Account Summary
 - Check "Take account online" button
 - Click Create

BIG RIG MEDIA®



6. Once the account is created:

- Click on your new account in the “Accounts” list on the left
- Click on “Outgoing Mail Server (SMTP)” and select “Edit Server List...”



- Click “Advanced”
- Click “Use default ports”
- Choose Password from the “Authentication” drop-down menu
- Enter User Name and Password
- Click OK